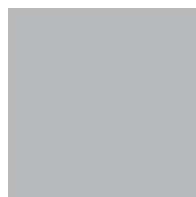


# cell Colour concept

## Stainless steel:



Natural 4113

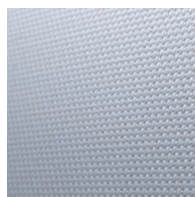


Bronze 4213

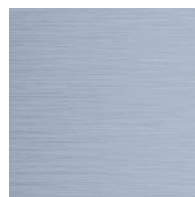


Platinum 4313

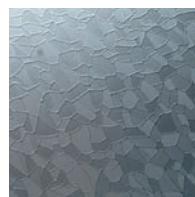
## Surface structure for stainless steel:



Linnen L

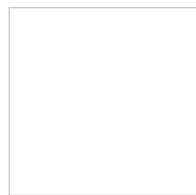


Brushed G



Patterned A  
(Austenit)

## Aluminium:



Signal white 9419  
similar to RAL 9003



Agate grey 7319  
similar to RAL 7038



Anthracite 7603  
similar to RAL 7005



Dark blue 5603  
similar to RAL 5008

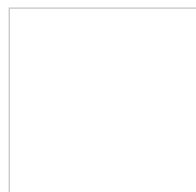


Dark red 3603  
similar to RAL 3004



Deep black 7613  
similar to RAL 9005

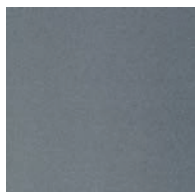
## Steel:



Traffic white 9317  
similar to RAL 9016



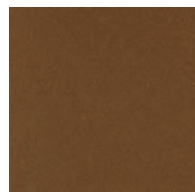
Light grey 7208  
similar to RAL 7035



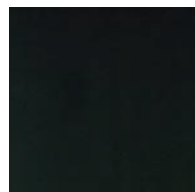
Silver grey 7303  
similar to RAL 9006  
(metallic)



Metal grey 7507  
similar to 9007



Copper brown 8307  
similar to NCS S 4030-Y30R  
(metallic)



Brilliant black 7907  
similar to RAL 9017



Digital print <sup>2</sup>



BiColor <sup>3</sup>

## Profiles, hinges, supporting legs and accessories:



White 02 <sup>1</sup>  
similar to RAL 9016



Manhattan 05 <sup>1</sup>  
similar to NCS 2801-Y36R



Anthracite 03 <sup>1</sup>  
similar to RAL 7043



Dark blue 04 <sup>1</sup>  
similar to RAL 5003



Red 11\*  
similar to RAL 3003



Dark red 01 <sup>1</sup>  
similar to RAL 3005



Yellow 10 <sup>1</sup>  
similar to RAL 1023



Satin anodised 08  
similar to E6/EV1



Stainless steel V2A 12

## Colour concept valid from 07/2019

<sup>1</sup> Coloured profiles, hinges and supporting legs available for variocell

<sup>2</sup> Special colours as well as customised digital prints available on request for a surcharge, prolonged delivery times must be considered.

<sup>3</sup> Due to the composite construction of cell, the panels and doors can have different colours – cell BiColor!

Please note that the colours shown above may slightly differ from the original colour due to typographic reasons. We would gladly advise you personally.