



WC-cubicles BASIC



# KEMMLIT For every demand

As market leader for washroom cubicles, KEMMLIT offer a variety of high class solutions ranging from cubicles and lockers to entire washrooms. Everything we do is based on a clear commitment to the highest quality regarding products,

our consulting service and installation. What sets us apart is qualified know-how, state-of-the-art manufacturing and innovative design. For these reasons we have received numerous prizes and awards within the last few years.

What can we do for you?

**For further information:**  
[www.kemmlit.de/basic](http://www.kemmlit.de/basic)  
**Status 07/2017**



# BASIC At a glance

KEMMLIT For every demand	2
BASIC type C Extremely sturdy made of HPL	4
BASIC type D Low cost made of particle board	6
BASIC type E Made of steel sheet	8
BASIC Planning aid	10
BASIC Colour concept	10
KEMMLIT Our promise	11



[www.kemmlit.de](http://www.kemmlit.de)

# BASIC type C Extremely sturdy made of HPL



Type C-BASIC is ideal for both wet and dry areas with high stability, durability and hygiene requirements.

The unique static interconnection of aluminium sections as well as the high-quality fittings are characteristic for this system. The headrail consists of an extremely sturdy three-chamber stabiliser. All screw connections are solid. This guarantees continuous and trouble-free performance.

Panels and doors are made of 13 mm, water-resistant, solid grade laminate HPL panels with machine-milled edges. The panels are therefore scratch-, wear- and abrasion-resistant.

The aluminium supporting legs with stainless steel core have a solid nylon cover sleeve and a height-adjustable mechanism to compensate for tolerances in floor level of up to 30 mm.

The milled from the solid aluminium lock cover plate with sturdy zinc die-cast lock is user-friendly and prevents material fatigue.

The sturdy three-roller edge hinges made of aluminium feature maintenance-free bearing bushes and are screwed hidden from sight to the face of the panel. Also available with finger protection!

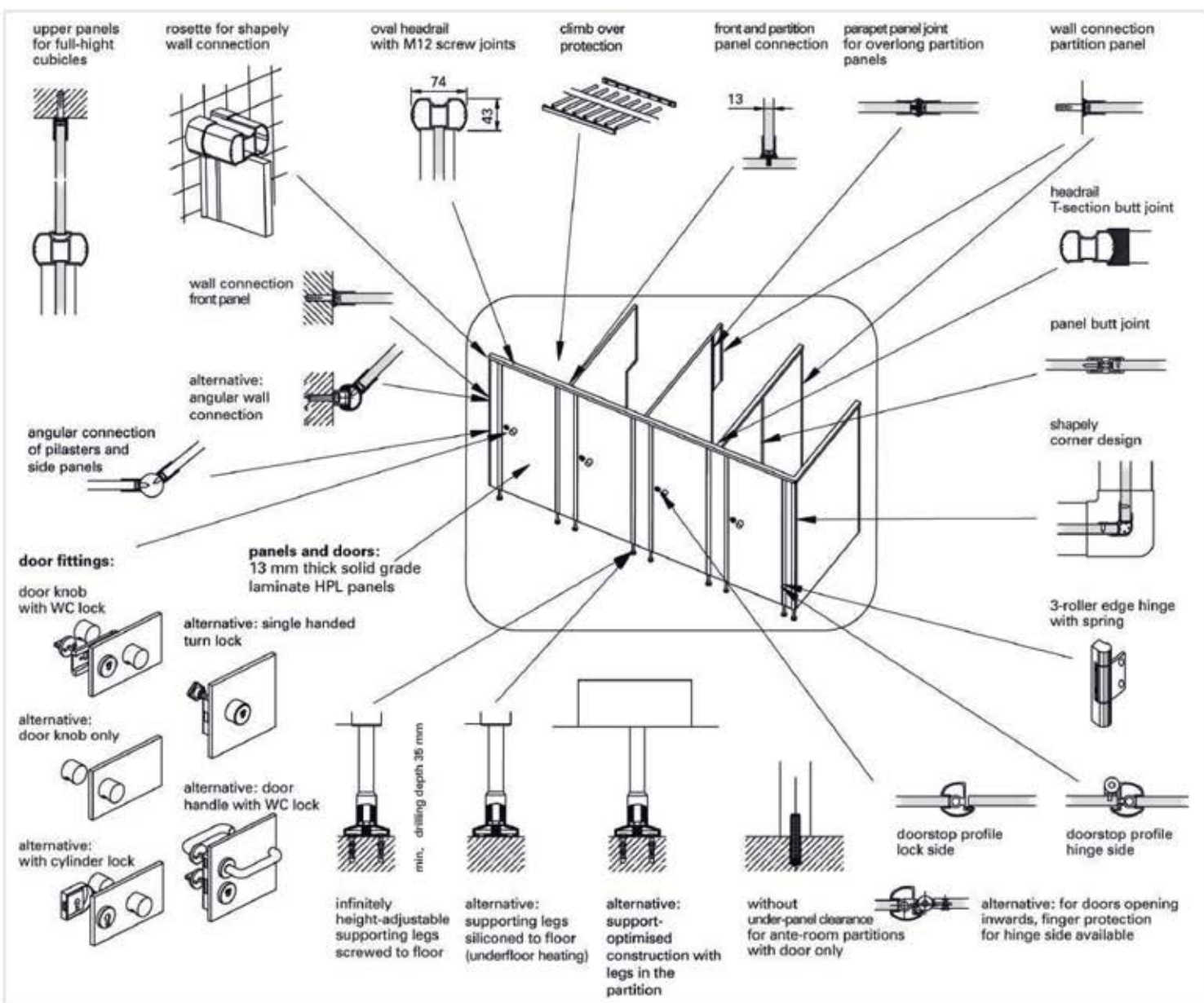
All doors can be installed either with automatic closing or opening. End-to-end rubber buffers in the doorstop profiles ensure quiet closing.



## Einsatzbereiche:

- schools
- universities
- industrial buildings
- administration buildings
- hospitals
- sports- and leisure centres
- camp sites
- hotels
- restaurants
- public facilities





# BASIC type D Low cost made of particle board



Type D-BASIC is the low-cost solution for dry areas where quality, stability and harmonising design are essential.

Panels and doors are made of 30 mm sturdy, formaldehyde-free, high-density melamine resin-coated particle board. The surface of the panels consists of directly applied melamine resin coating. The edges have a protective 3 mm ABS lipping.

All profiles are made of high-quality aluminium. The furniture is shapely integrated into doors and panels. The warp-resistant headrail, available either in oval or rectangular design, guarantees long-lasting stability.

Specially developed for high requirements, the 2-roller edge hinges made of aluminium feature a maintenance-free bearing bush.



The beautifully designed door handles made of impact resistant nylon with metal core, or alternatively aluminium, with WC lock and metal bolt are extremely robust. As an option, door knobs with hinges for automatic door closing can be installed.

The supporting legs have a solid cover sleeve and are infinitely height-adjustable to compensate for tolerances in floor level of up to 30 mm. The supporting legs are available either completely made of stainless steel, or satin anodised aluminium with flat cover sleeve or with nylon cover sleeve.

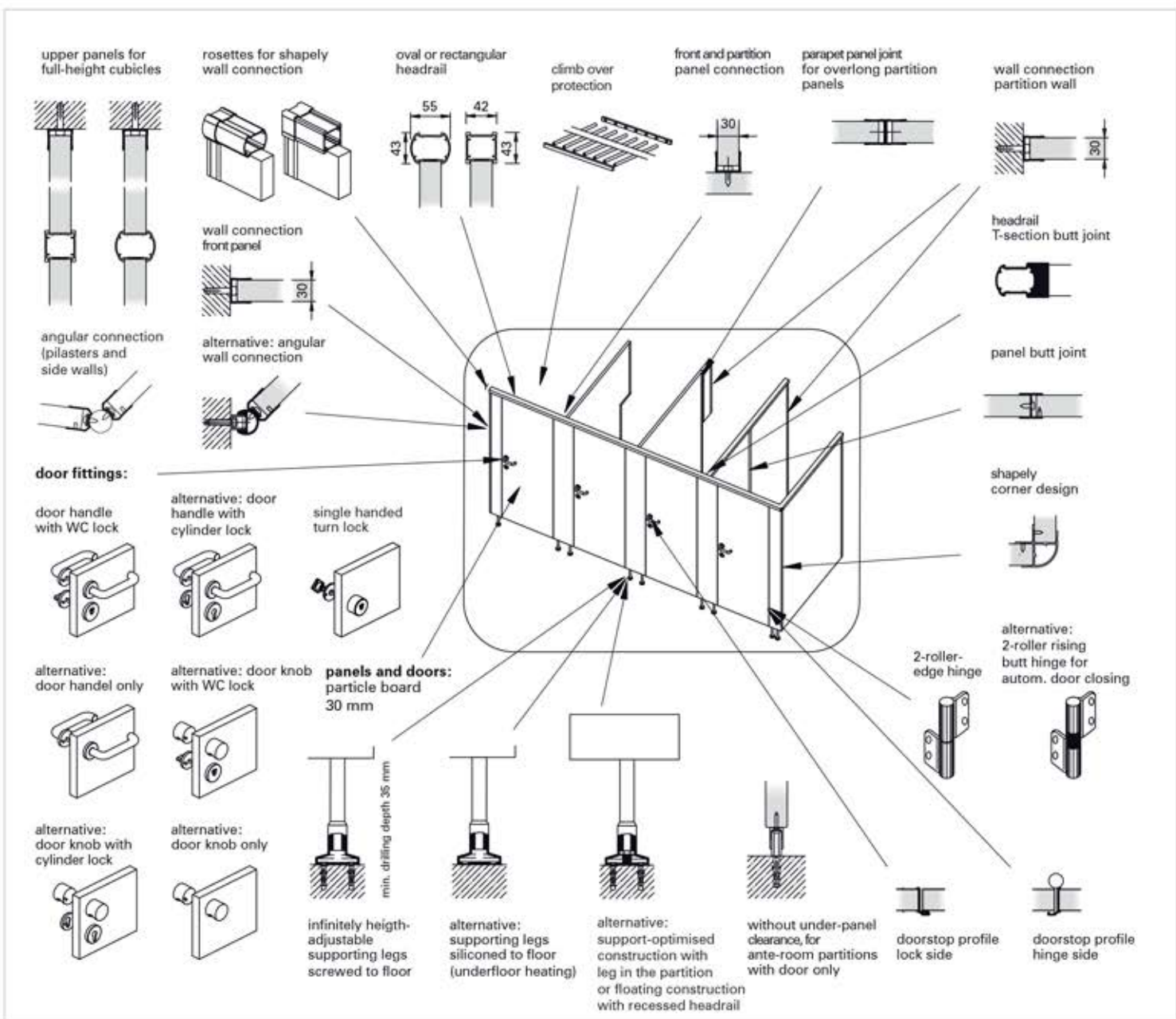


Harmonising colours for panels, profiles, hinges, fittings, supporting legs and accessories round off the visual impact of the cubicles.



## Areas of application:

- industrial buildings
- restaurants
- hotels
- public facilities
- schools



# BASIC type E Made of steel sheet



Type E-BASIC is an aesthetically beautiful cubicle system for both wet and dry areas. Panels and doors consist of 30 mm sheet steel composite elements.

This specially developed construction combined with the core inlay ensures extreme robustness and rigidity. This guarantees long life expectancy.

The exceedingly sturdy steel-sheets with material thickness of 0,6 mm have very good corrosion protection. Both sides are hot-dip galvanized and have an additional special protective coating on the inside. The outside is protected by a sturdy polyester coating thus ensuring immaculately hygienic cleaning.



All profiles are made of high-quality aluminium. The furniture is beautifully integrated into doors and panels. The warp-resistant headrail, available either in oval or rectangular design, guarantees long-lasting stability.

2-roller rising butt hinges with maintenance-free bearing bush are ideally suited for either automatic closing or opening of the doors.

The door knobs made of impact resistant nylon or alternatively aluminium with WC-lock and metal bolt are extremely sturdy. As an option, door handles are available.

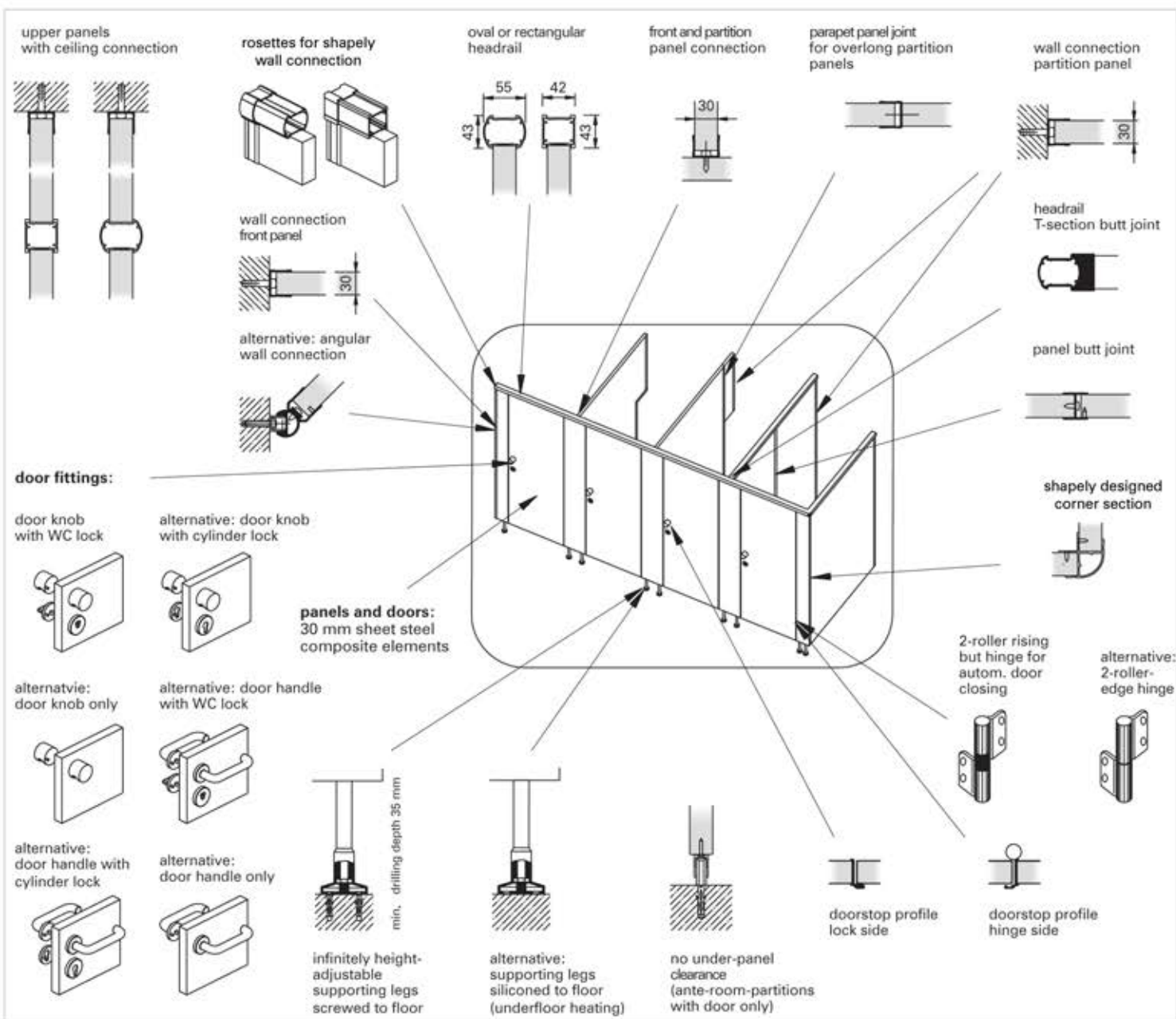
All supporting legs are infinitely height-adjustable to compensate for deviations in floor level of up to 30 mm. All constructive components are made of corrosion-free aluminium or rust-proof stainless steel.



## Areas of application:

- universities
- industrial buildings
- administrative buildings
- hospitals
- hotels
- camp sites
- restaurants
- public facilities

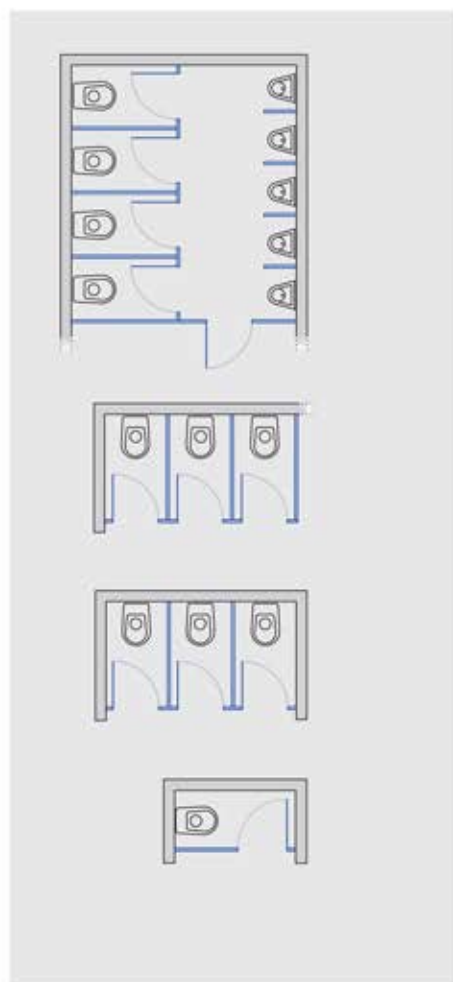
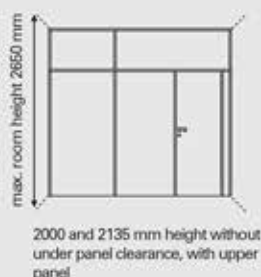
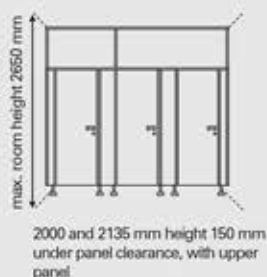
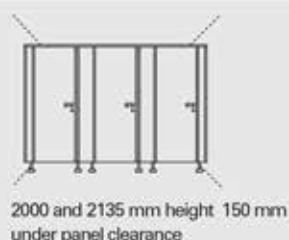




# BASIC Planning aid

Ausstattung	Ausführung
Approvalmark	TÜV-approved, GS tested safety
Cubicle height	2000 mm panels and doors, alternative 2135 mm
Upper panel	max. 2650 mm room height
Under-panel	150 mm, adjustable +25 / -5 mm
Door width (nominal size)	570 mm type C 640, type E 620, type D 650 750 mm 980 mm
Cubicle depth	up to 2000 mm, standard 1500 mm (from 1601 mm with leg and butt joint connection in the partition)
Plan view	range of cubicles or diagonal cubicles (see drawing)
Anteroom dividing cubicle	without under-panel clearance, height: 2000 mm with upper panel up to 2650 mm
Urinal screens	Normschamwand 435 x 825 mm Schamwand mit Fuß 435/600 x 1475 mm inkl. 150 mm Bodenfreiheit
Modesty-screens	with supporting leg 600 mm x 2000 mm including 150 mm under-panel clearance

## Skizze



Please refer to our representative in your vicinity for specification sheets or visit our website at [www.kemmlit.com](http://www.kemmlit.com)

subject to technical changes 04/2017

# BASIC Colour concept

## Panels and doors made of HPL / particle board:



Traffic white 9317  
similar to NCS S 0502-G50Y



Granite white 9317 P



Light grey 7208  
similar to NCS S 2500-N



Quartz grey 7708  
similar to NCS S 5000-N



Graphite 7808  
similar to NCS S 7502-B



Lagoon blue 5408  
similar to NCS S 1030-R90B



Tornado red 3508  
similar to NCS S 0580-Y90R



Corn yellow 1708  
similar to NCS S 1070-Y10R



Lemon green 6715  
similar to NCS S 1060-G60Y

## Panels and doors made of steel sheet:



Traffic white 9317  
similar to RAL 9016



Light grey 7208  
similar to RAL 7035

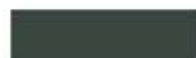
## Profiles, hinges, furniture, ABS-lipping, supporting legs and accessories:



White 02  
similar to RAL 9016



Manhattan 05  
similar to NCS 2801-Y36R



Anthracite 03  
similar to RAL 7043



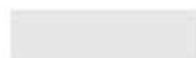
Red 11  
similar to RAL 3003



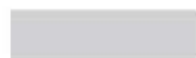
Dark blue 04  
similar to RAL 5003



Yellow 10  
similar to RAL 1023



Satin anodised 08<sup>1</sup>  
(Profiles, hinges, furniture, accessories similar to E6 / EV1)



Stainless steel V2A 12<sup>2</sup>  
(only legs and accessories)

## Colour concept valid from 07/2017

<sup>1</sup> Surcharge for furniture and supporting leg flat cover sleeve

<sup>2</sup> Surcharge for profiles, hinges, furniture and supporting legs

Please note, that the colours shown above may slightly differ from the original colour due to typographic reasons.

We would gladly advise you personally.



## ON-TIME INSTALLATION

---

98% of all requested delivery  
dates can be fulfilled



## FASTEST PRODUCTION & INSTALLATION

---

Prompt and on-schedule  
delivery



## IMMEDIATE REPAIR

---

Immediate repair  
when you need it



## HIGHEST PRODUCT QUALITY

---

Top quality in terms of material and  
processing



## WE ARE IN YOUR VICINITY

---

Individual consulting service by  
professional sales representatives

**Individual  
sanitary fittings  
by KEMMLIT®**

**For example:**

Changing cubicles  
Toilet cubicles  
Locker systems  
Shower cubicles  
Vanity units  
Shelving  
Bench seating  
Baby changing stations  
Doors and frames  
Accessories

KEMMLIT UK

Bays Platt,  
Skirmett,  
Henley-on-Thames,  
Oxfordshire  
RG9 6TD  
United Kingdom

Tel: +44(0)1491 638606  
Fax: +44(0)1491 638072

[www.kemmlituk.com](http://www.kemmlituk.com)  
[info@kemmlituk.com](mailto:info@kemmlituk.com)

